

6E2-A-4 5.0L (VIN E) & 5.7L (VIN 7) DRIVEABILITY AND EMISSIONS

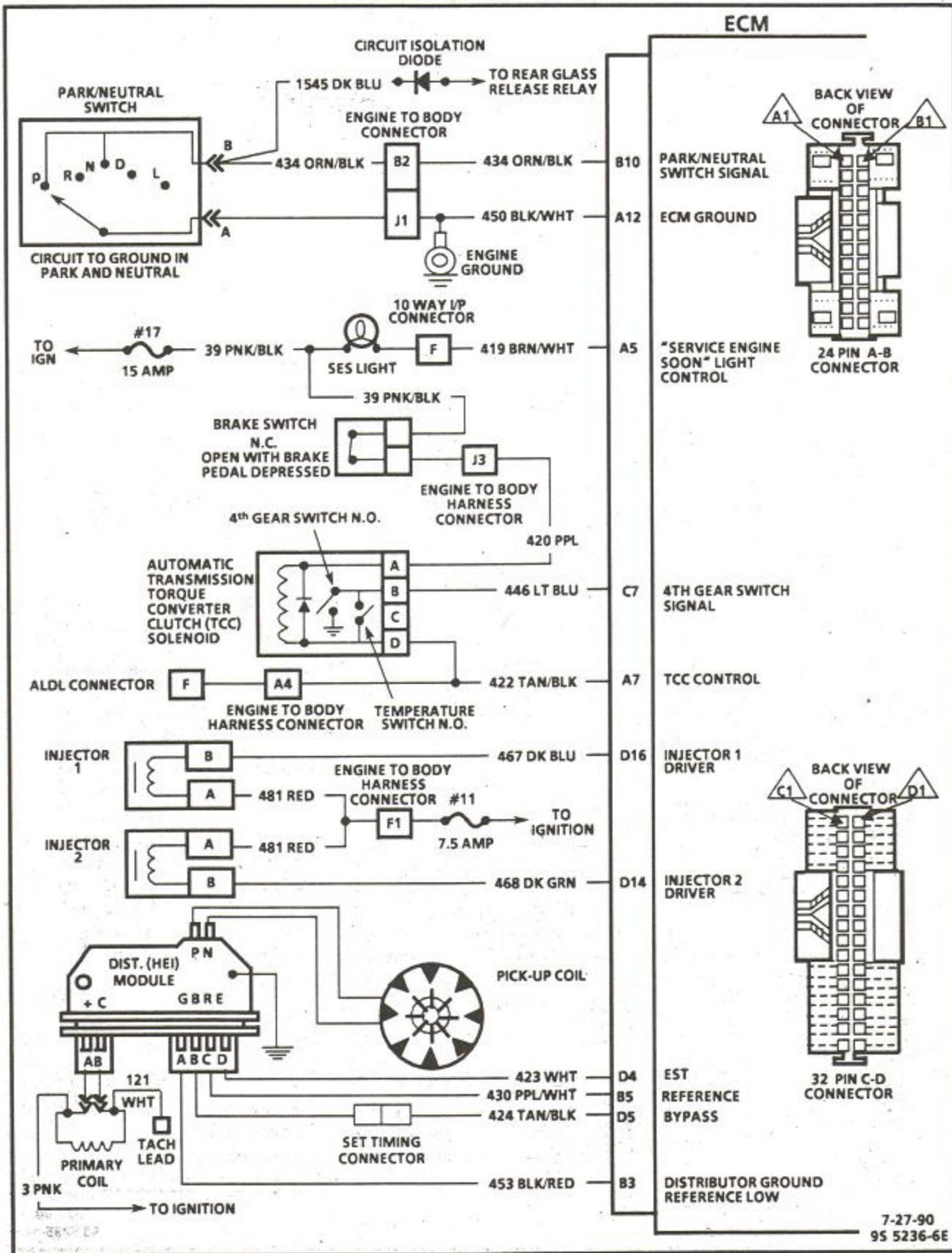


Figure A-3 - ECM Wiring Diagram 5.0L (VIN E) & 5.7L (VIN 7) "B" Carline (2 of 5)

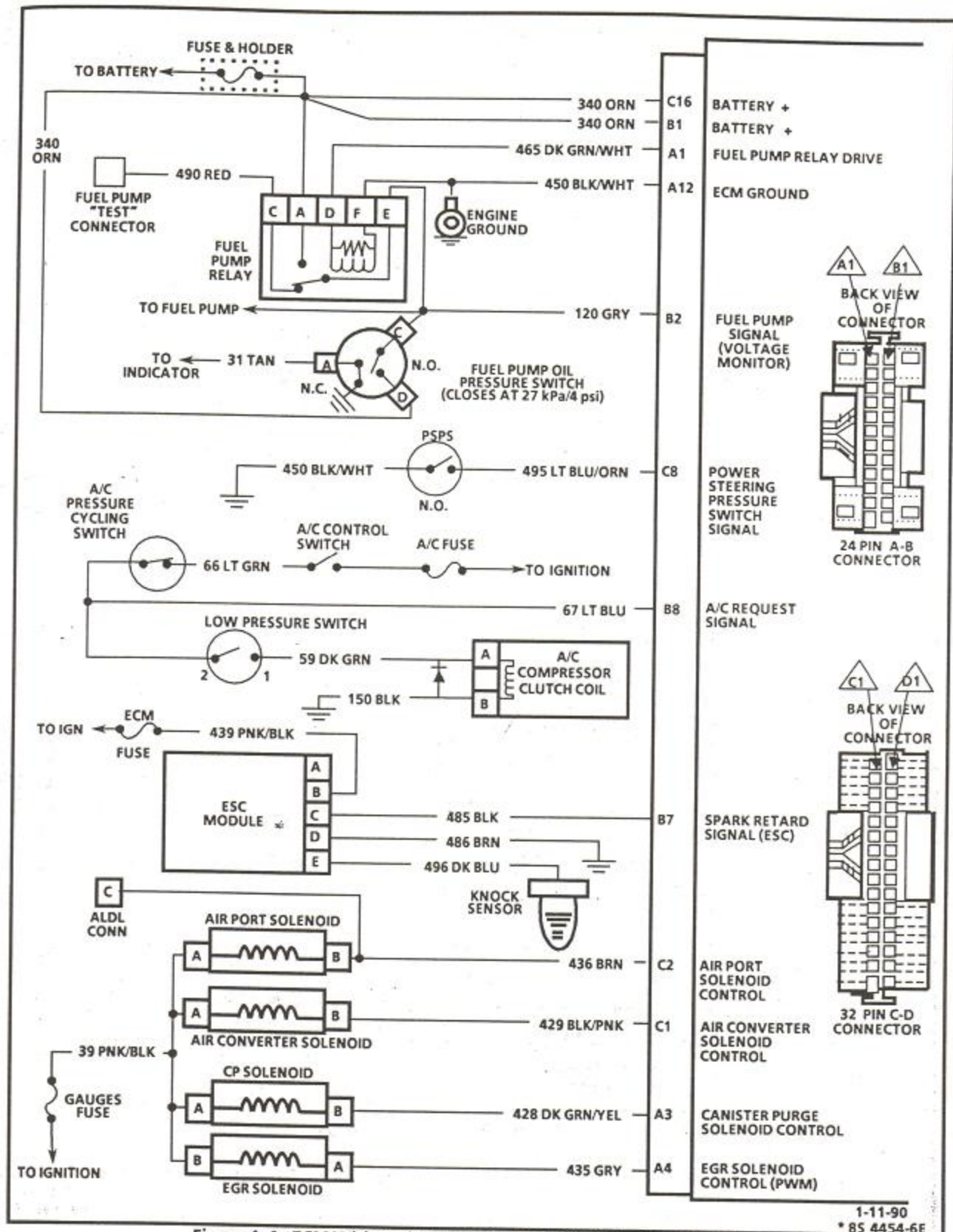
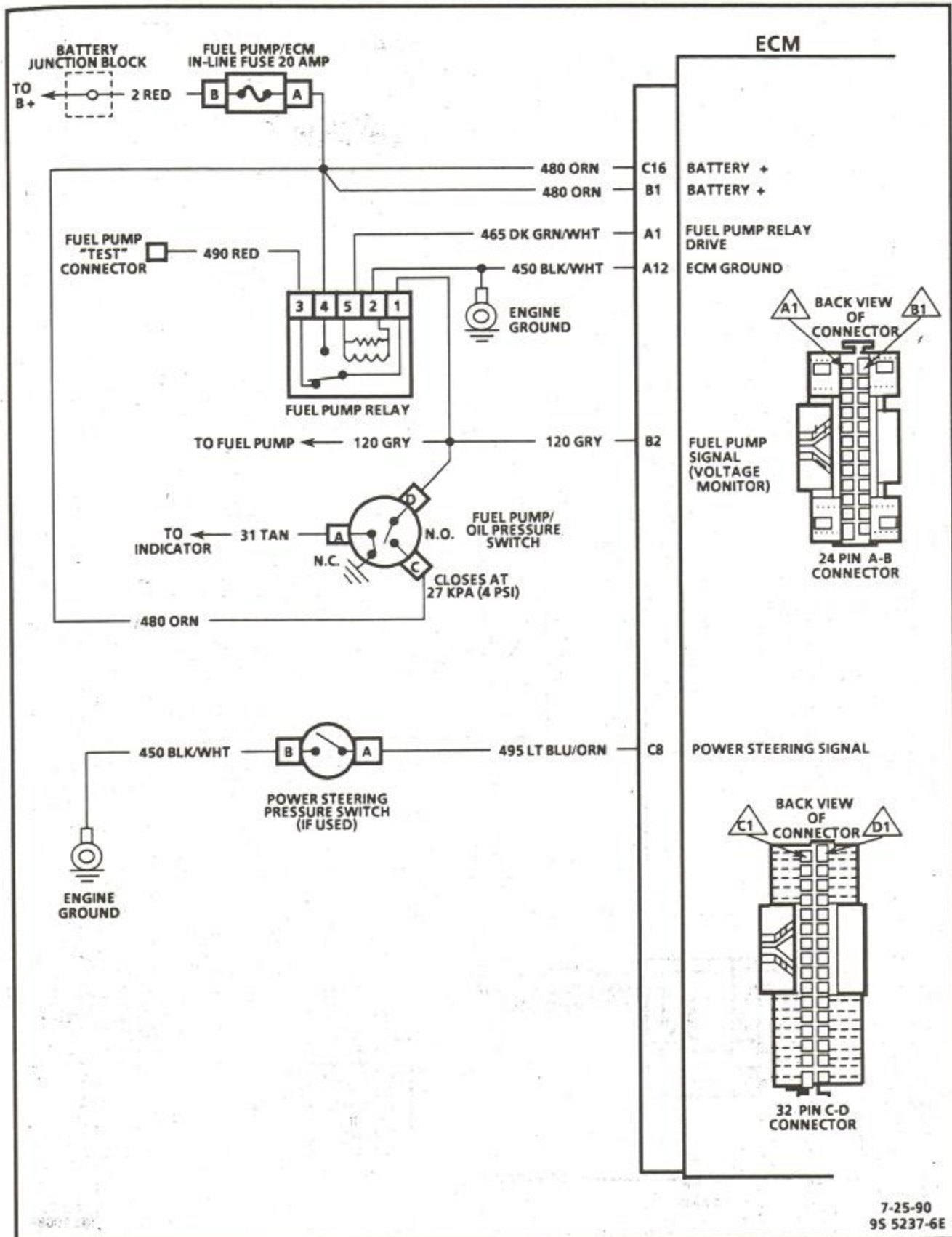


Figure A-4 - ECM Wiring Diagram 5.0L (VIN E) "F" Carline (3 of 3)



7-25-90  
95 5237-6E

Figure A-4 - ECM Wiring Diagram 5.0L (VIN E) & 5.7L (VIN 7) "B" Carline (3 of 5)

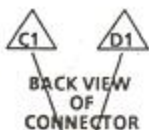
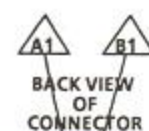
### FUEL INJECTION ECM CONNECTOR IDENTIFICATION

This ECM voltage chart is for use with a digital voltmeter to further aid in diagnosis. The voltages you get may vary due to low battery charge or other reasons, but they should be very close.

#### THE FOLLOWING CONDITIONS MUST BE MET BEFORE TESTING:

- Engine at operating temperature
- Engine idling in closed loop (for "Engine Run" column)
- Diagnostic "Test" terminal not grounded
- "Scan" tool not installed

VOLTAGE					VOLTAGE				
KEY "ON"	ENG. RUN	CIRCUIT	PIN	WIRE COLOR	WIRE COLOR	PIN	CIRCUIT	KEY "ON"	ENG. RUN
0*	B+	FUEL PUMP RELAY DRIVE	A1	DK GRN/ WHT	BLK/ WHT	B1	BATTERY	B+	B+
		NOT USED	A2		GRY	B2	FUEL PUMP SIGNAL	0	B+
0*	B+	CANISTER PURGE SOL. CONTROL	A3	DK GRN/ YEL		B3	DIST. GROUND REFERENCE LOW	0*	0*
B+	B+	EGR SOLENOID CONTROL	A4	GRY		B4	NOT USED		
0*	B+	"SERVICE ENGINE SOON" LIGHT	A5	BRN/ WHT		B5	REFERENCE	0	1.3
B+	B+	IGNITION FEED	A6	PNK/ BLK		B6	VATS	5	5
B+	B+	M/T SHIFT LIGHT	A7	TAN/ BLK		B7	SPARK RETARD SIGNAL (ESC)	9.2	9.3
B+	B+	A/T TCC CONTROL	A7			B8	A/C REQUEST "OFF" SIGNAL "ON"	0	0
2-5	2-5					B9	NOT USED	B+	B+
VARYING		SERIAL DATA DIAGNOSTIC "TEST" TERMINAL	A8	ORN WHT/ BLK		B10	PARK/NEUTRAL SWITCH SIGNAL	0	0
5	5	VEHICLE SPEED SENSOR SIGNAL	A9	BRN		B11	NOT USED		
0 OR 12	0 OR 12	CTS, TPS AND MAT SENSOR GROUND	A10	BLK		B12	NOT USED		
0*	0*	ECM GROUND	A12	BLK/ WHT					
B+	B+	A.I.R. CONVERTER SOLENOID	C1	BLK/ PNK		D1	ECM GROUND	0	0
B+	B+	A.I.R. PORT SOLENOID	C2	BRN		D2	MAP SENSOR GROUND	0	0
NOT USEABLE		IAC "B" LO	C3	LT GRN/ BLK		D3	NOT USED		
NOT USEABLE		IAC "B" HI	C4	WHT		D4	EST	0	1.3
NOT USEABLE		IAC "A" HI	C5	LT BLU/ WHT		D5	BYPASS	0	4.75
NOT USEABLE		IAC "A" LO	C6	LT BLU BLK		D6	O <sub>2</sub> SENSOR GROUND	0	0
0	0	4 TH GEAR SWITCH SIGNAL	C7	LT BLU		D7	O <sub>2</sub> SENSOR SIGNAL	.3 - .5	.1 - .9
B+	B+	POWER STEERING PRESSURE SWITCH	C8	LT BLU/ ORN		D8	NOT USED		
0	0	CRANK SIGNAL	C9	PPL/ WHT		D9	NOT USED		
1.6	1.6	CTS SIGNAL	C10	YEL		D10	NOT USED		
4.75	1.1	MAP SENSOR SIGNAL	C11	LT GRN		D11	NOT USED		
2.5	2.5	MAT SENSOR SIGNAL	C12	TAN		D12	NOT USED		
.7	.7	TPS SIGNAL	C13	DK BLU		D13	NOT USED		
5	5	+5 VOLTS REFERENCE	C14	GRY		D14	INJECTOR 2 DRIVER	B+	B+
B+	B+	INJECTOR 2 DRIVER	C15	DK GRN		D15	INJECTOR 1 DRIVER	B+	B+
B+	B+	BATTERY	C16	ORN		D16	INJECTOR 1 DRIVER	B+	B+



- 1 Varies from .60 to battery voltage, depending on position of drive wheels.
- 2 12 volts for first two seconds.
- 3 Varies.
- 4 12 volts when fuel pump is running.
- 5 Varies with temperature.

- 6 Reads battery voltage in gear.
  - 7 12 volts, when engine is cranking.
- \* Less than .5 volt.

ENGINE 5.0L

Figure A-5 - ECM Connector Terminal End View 5.0L (VIN E) "F" Carline

6E2-A-6 5.0L (VIN E) & 5.7L (VIN 7) DRIVEABILITY AND EMISSIONS

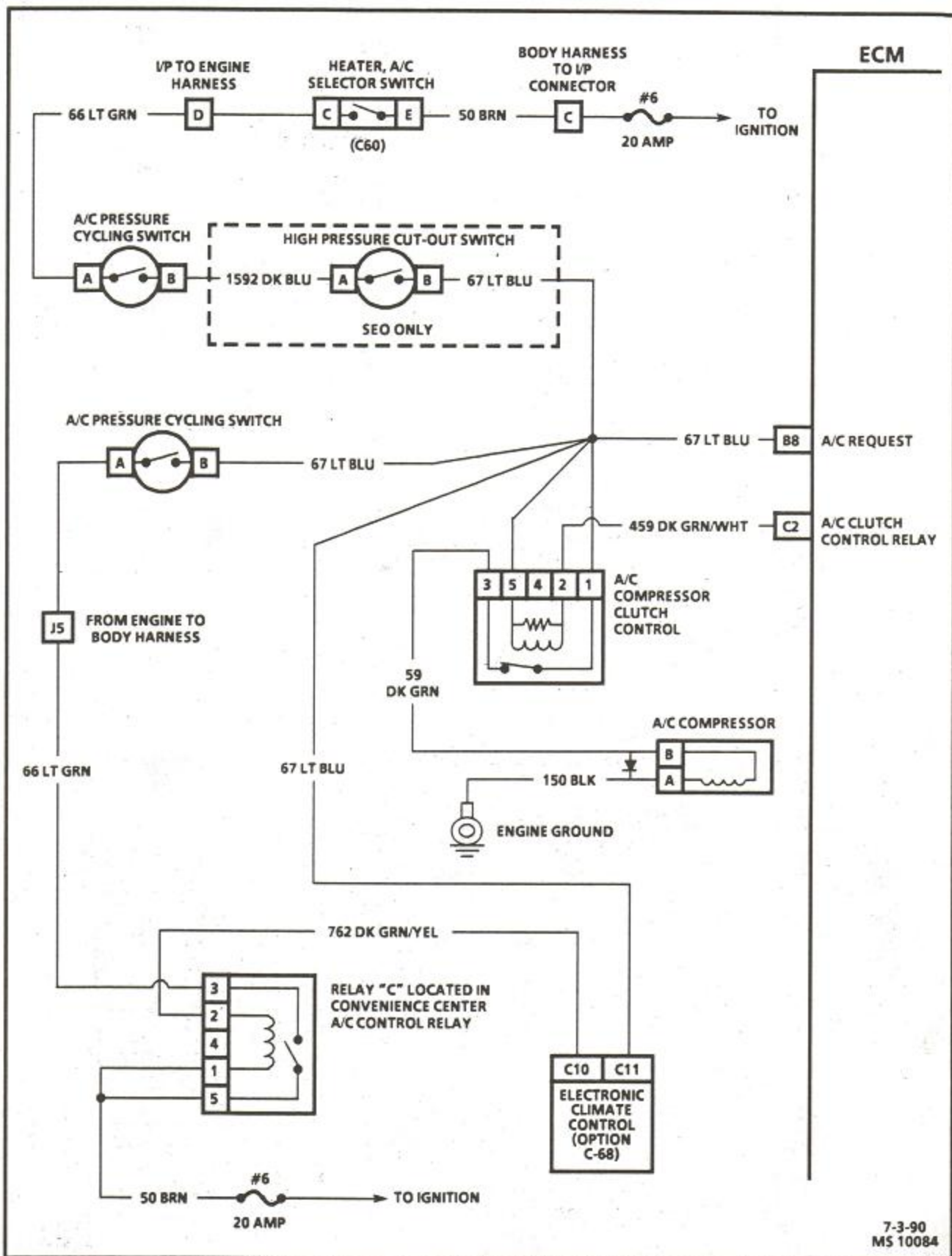
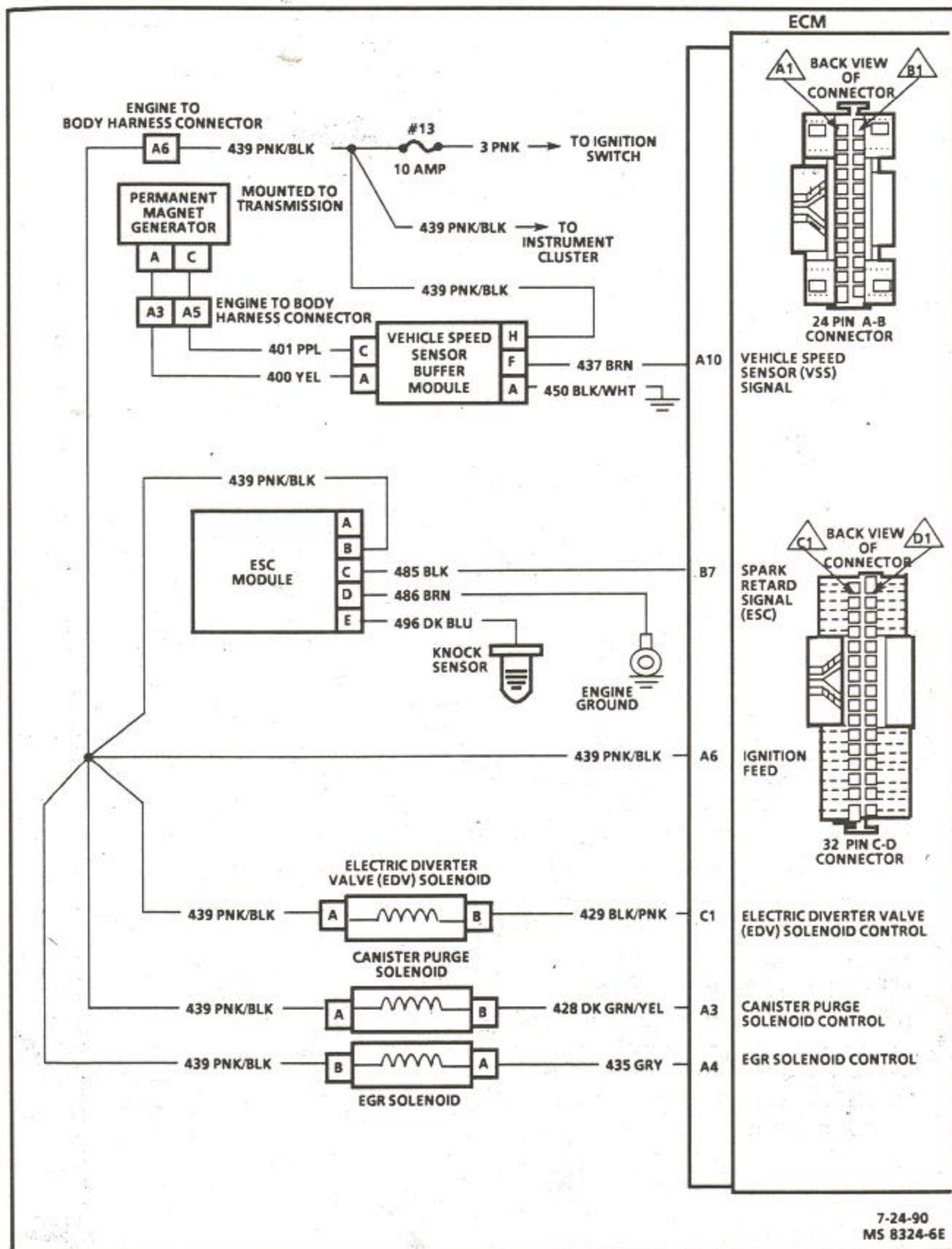


Figure A-5 - Wiring Diagram 5.0L (VIN E) & 5.7L (VIN 7) "B" Carline (4 of 5)



7-24-90  
MS 8324-6E

Figure A-6 - ECM Wiring Diagram 5.0L (VIN E) & 5.7L (VIN 7) "B" Carline (5 of 5)

### FUEL INJECTION ECM CONNECTOR IDENTIFICATION

This ECM voltage chart is for use with a digital voltmeter to further aid in diagnosis. The voltages you get may vary due to low battery charge or other reasons, but they should be very close.

#### THE FOLLOWING CONDITIONS MUST BE MET BEFORE TESTING:

- Engine at operating temperature • Engine idling in "Closed Loop" (For "Engine Run" column)
- Diagnostic "test" terminal not grounded • "Scan" tool not installed

VOLTAGE					
KEY "ON"	ENG. RUN	CIRCUIT	PIN	WIRE COLOR	CKT NO.
② 0*	B+	FUEL PUMP RELAY DRIVE	A1	DK GRN/WHT	465
			A2		
0*	B+	CANISTER PURGE SOL CONTROL	A3	DK GRN/YEL	428
B+	B+	EGR SOLENOID CONTROL	A4	GRY	435
0*	B+	"SERVICE ENGINE SOON" LIGHT	A5	BRN/WHT	419
B+	B+	IGNITION FEED	A6	PNK/BLK	439
B+	B+	TCC CONTROL	A7	TAN/BLK	422
3-5 VARYING	3-5	SERIAL DATA	A8	ORN	461
5	5	DIAGNOSTIC "TEST" TERMINAL	A9	WHT/BLK	451
① 0 OR 12	0 OR 12	VEHICLE SPEED SENSOR SIGNAL	A10	BRN	437
0*	0*	CTS, TPS AND IAT SENSOR GROUND	A11	BLK	452
0*	0*	ECM GROUND	A12	BLK/WHT	450



(BLACK)

- 1 Varies from .60 to battery voltage, depending on position of drive wheels.
- 2 12 volts for first two seconds.
- 3 Varies.
- 4 12 volts when fuel pump is running.
- 5 Varies with temperature.
- 6 Reads battery voltage in gear.
- 7 12 volts, when engine is cranking.
- \* Less than 5 volts.

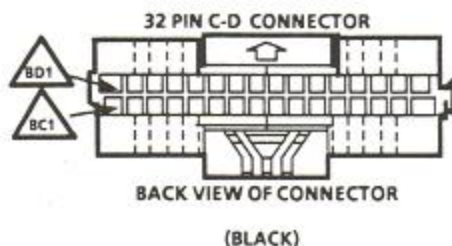
VOLTAGE					
KEY "ON"	ENG. RUN	CIRCUIT	PIN	WIRE COLOR	CKT NO.
B+	B+	BATTERY	B1	ORN	480
④ 0	B+	FUEL PUMP SIGNAL	B2	GRY	120
		DIST GROUND REFERENCE LOW	B3	BLK/RED	453
			B4		
0	1.5	REFERENCE	B5	PPL/WHT	430
			B6		
9.0	9.0	SPARK RETARD SIGNAL (ESC)	B7	BLK	485
⑥ 0	0	A/C REQUEST SIGNAL	B8	LT BLU	67
B+	B+		B9		
0	0	PARK/NEUTRAL (P/N) SWITCH SIGNAL	B10	ORN/BLK	434
			B11		
			B12		

ENGINE 5.0L LO3  
5.7L LO5  
CARLINE "B"

Figure A-7 - ECM Connector Terminal End View 5.0L (VIN E) & 5.7L (VIN 7) "B" Carline (1 of 2)

VOLTAGE					
KEY "ON"	ENG. RUN	CIRCUIT	PIN	WIRE COLOR	CKT NO.
B+	0	ELECTRIC DIVERTER VALVE SOLENOID	C1	BLK/PNK	429
8	0 B+	A/C RELAY CONTROL	C2	DK GRN/WHT	459
		IAC "B" LO	C3	LT GRN/BLK	444
		IAC "B" HI	C4	LT GRN/WHT	443
		IAC "A" HI	C5	LT BLU/WHT	441
		IAC "A" LO	C6	LT BLU/BLK	442
B+	B+	4 <sup>th</sup> GEAR SWITCH SIGNAL	C7	LT BLU	446
9	B+	POWER STEERING PRESSURE SWITCH (IF USED)	C8	LT BLU/ORN	495
7	0	CRANK SIGNAL	C9	PPL/WHT	806
5	1.6	CTS SIGNAL	C10	YEL	410
3	4.75	MAP SENSOR SIGNAL	C11	LT GRN	432
5	2.5	IAT SENSOR SIGNAL	C12	TAN	472
	.5	TPS SIGNAL	C13	DK BLU	417
	5	+5 VOLTS REFERENCE	C14	GRY	416
			C15		
B+	B+	BATTERY	C16	ORN	480

VOLTAGE					
KEY "ON"	ENG. RUN	CIRCUIT	PIN	WIRE COLOR	CKT NO.
0	0	ECM GROUND	D1	TAN/WHT	551
0	0	MAP SENSOR GROUND	D2	PPL	455
			D3		
0	1.1	EST	D4	WHT	423
0	4.5	BYPASS	D5	TAN/BLK	424
0	0	OXYGEN (O <sub>2</sub> ) SENSOR GROUND	D6	TAN	413
3	.3 - .5	OXYGEN (O <sub>2</sub> ) SENSOR SIGNAL	D7	PPL	412
			D8		
			D9		
			D10		
			D11		
			D12		
			D13		
B+	B+	INJECTOR 2 DRIVER	D14	DK GRN	468
			D15		
B+	B+	INJECTOR 1 DRIVER	D16	DK BLU	467



- 1 Varies from .60 to battery voltage.
- 2 12 volts for first two seconds.
- 3 Varies.
- 4 12 volts when fuel pump is running.
- 5 Varies with temperature.
- 6 Reads battery voltage in gear.
- 7 12 volts, when engine is cranking.
8. With engine running and A/C "ON."
9. With power steering load, engine running.
- \* Less than .5 volt.

5.0L LO3  
ENGINE 5.7L LO5  
CARLINE "B"

Figure A-8 - ECM Connector Terminal End View 5.0L (VIN E) & 5.7L (VIN 7) "B" Carline (2 of 2)